

FAIVELEY TRANSPORT CZECH

Company presentation

01/2023

The information contained in this document may contain confidential, proprietary and/or privileged material of either Wabtec Corporation or one of its subsidiaries. Any review, retransmission, dissemination or other use of, or taking of any action in reliance upon, this information by persons or entities other than the intended recipient is prohibited unless authorized in writing. If you have received this document in error, please contact the sender and delete the material from any system and destroy any copies.



Faiveley Transport

A **Wabtec** Company



FAIVELEY TRANSPORT

CZECH

Pilsen



FAIVELEY TRANSPORT CZECH, Pilsen

- Since 1934
- More than 500 employees
- 65 M EUR turnover 2022
- Production area 27 000 m²
- Production of
 - Pantographs
 - Electro-mechanical switches
 - Trolleybus collectors
 - Doors, brakes, couplers, sanitation systems, convertors
- CoC: Switches and trolleybus collectors
- Investments in last 5 years: new factory, R&D electro-mechanical switches
- Strong engineering team

Certificates

- ISO/TS 22163 (IRIS)
- ISO 9001, ISO 14001, ISO 45001, ISO 3834, DIN 15085, DIN 6701

- TSI Certificates
- Customer audits:

ALSTOM

BOMBARDIER

Bombardier

ČD

ÖBB

GENERAL ELECTRIC

TALGO

Mitsubishi

SIEMENS

ŠKODA Electric

ŠKODA Transportation

ZSSK Cargo





Our Products

We Produce for Railway Industry and Public Transport

FAIVELEY TRANSPORT CZECH in Pilsen

Including R&D:

Pantographs for locos, EMUs, LRVs and electrobuses



Electro-mechanical switches

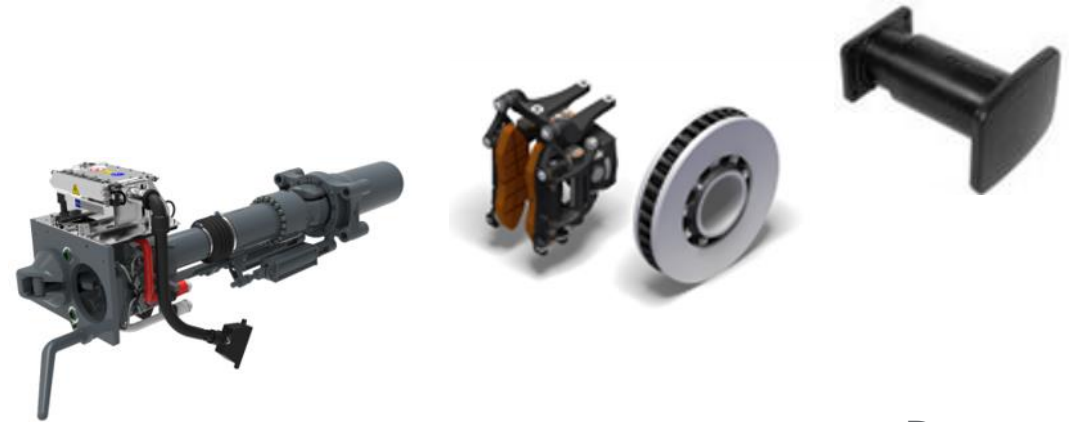


Trolleybus collectors



Transferred Products:

Brakes, couplings, buffers



Sanitary systems



Doors

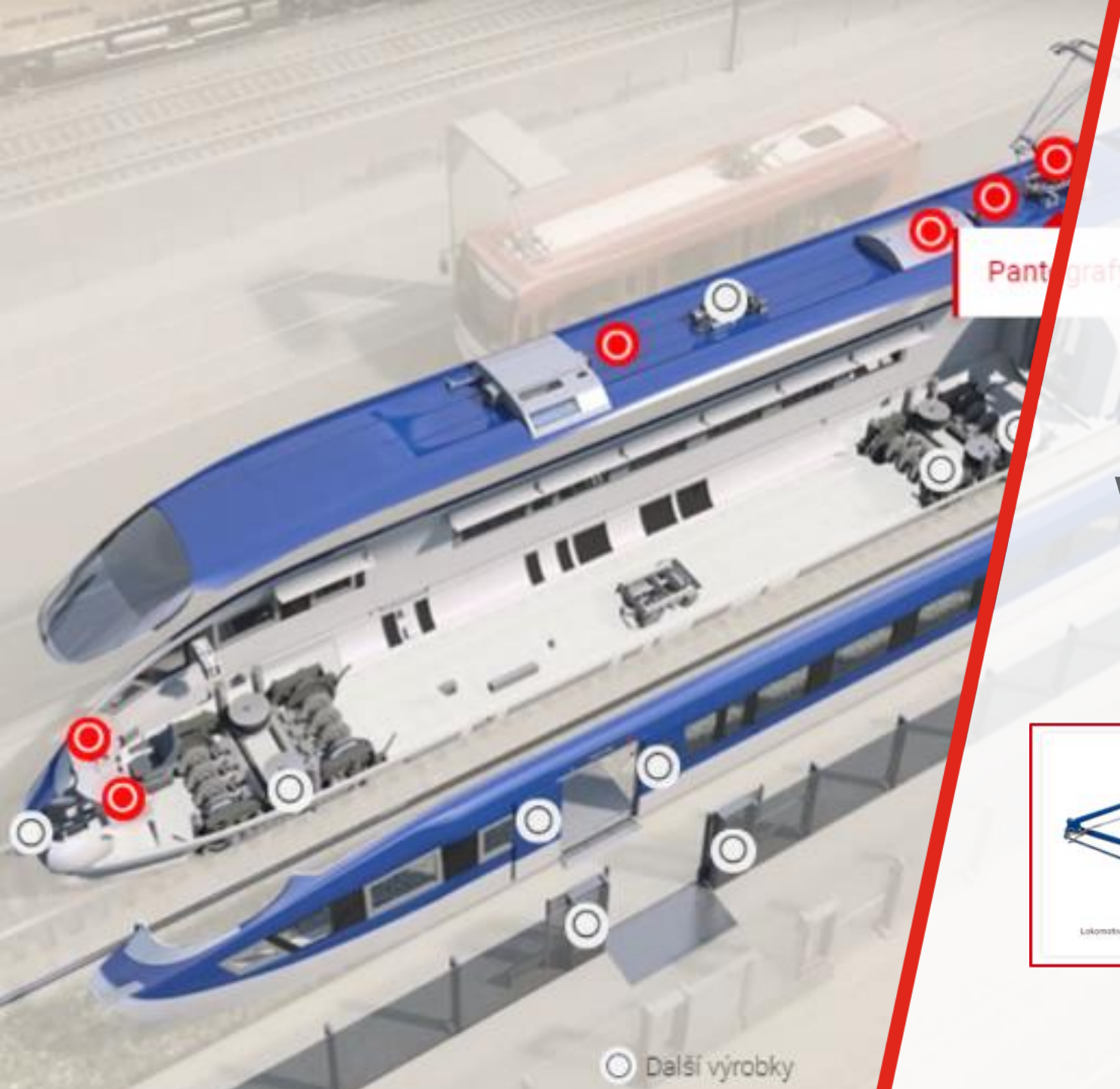


Auxiliary converters



For more details visit
our web site

www.ftczech.com



Lokomotivy a elektrické jednotky



Vysokorychlostní vlaky



Metro



Tramvaje



Thank you





FAIVELEY TRANSPORT CZECH, a.s.

Address:

U Přivaděče 1315/3
326 00 Plzeň
Czech Republic

Contact:

Tel: +420 379 207 111
E-mail: info.ftczech@wabtec.com
www.ftczech.com

ID NO: 25213423

FAIVELEY TRANSPORT CZECH registered in the
Companies Register managed by the Regional
Court in Pilsen in the Section B, File no. 652